

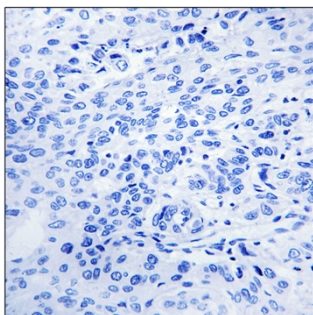
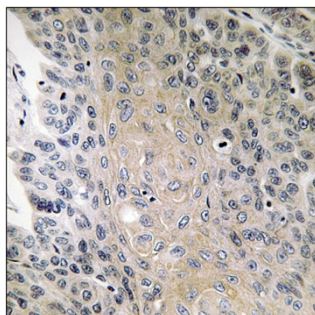


Rab 41 Polyclonal Antibody

Catalog No	YP-Ab-16203
Isotype	IgG
Reactivity	Human;Rat;Mouse;
Applications	IHC;IF;ELISA
Gene Name	RAB41
Protein Name	Ras-related protein Rab-41
Immunogen	The antiserum was produced against synthesized peptide derived from human RAB41. AA range:115-164
Specificity	Rab 41 Polyclonal Antibody detects endogenous levels of Rab 41 protein.
Formulation	Liquid in PBS containing 50% glycerol, 0.5% BSA and 0.02% sodium azide.
Source	Polyclonal, Rabbit,IgG
Purification	The antibody was affinity-purified from rabbit antiserum by affinity-chromatography using epitope-specific immunogen.
Dilution	IHC: 1/100 - 1/300. ELISA: 1/20000.. IF 1:50-200
Concentration	1 mg/ml
Purity	≥90%
Storage Stability	-20°C/1 year
Synonyms	RAB41; Ras-related protein Rab-41
Observed Band	
Cell Pathway	Cytoplasm . punctate localization concentrated in ruffled regions at the cell periphery.
Tissue Specificity	Widely expressed in brain, testis, lung, heart, ovary, colon, kidney, uterus and spleen but not in liver.
Function	similarity:Belongs to the small GTPase superfamily. Rab family.,
Background	This gene encodes a small GTP-binding protein that belongs to the largest family within the Ras superfamily. These proteins function as regulators of membrane trafficking. They cycle between inactive GDP-bound and activated GTP-bound states, which is controlled by GTP hydrolysis-activating proteins (GAPs). This family member can be activated by the GAP protein RN-Tre, and it is localized to the Golgi complex. [provided by RefSeq, May 2010],
matters needing attention	Avoid repeated freezing and thawing!

Usage suggestions

This product can be used in immunological reaction related experiments. For more information, please consult technical personnel.

Products Images

Immunohistochemistry analysis of paraffin-embedded human lung carcinoma, using RAB41 Antibody. The picture on the right is blocked with the synthesized peptide.